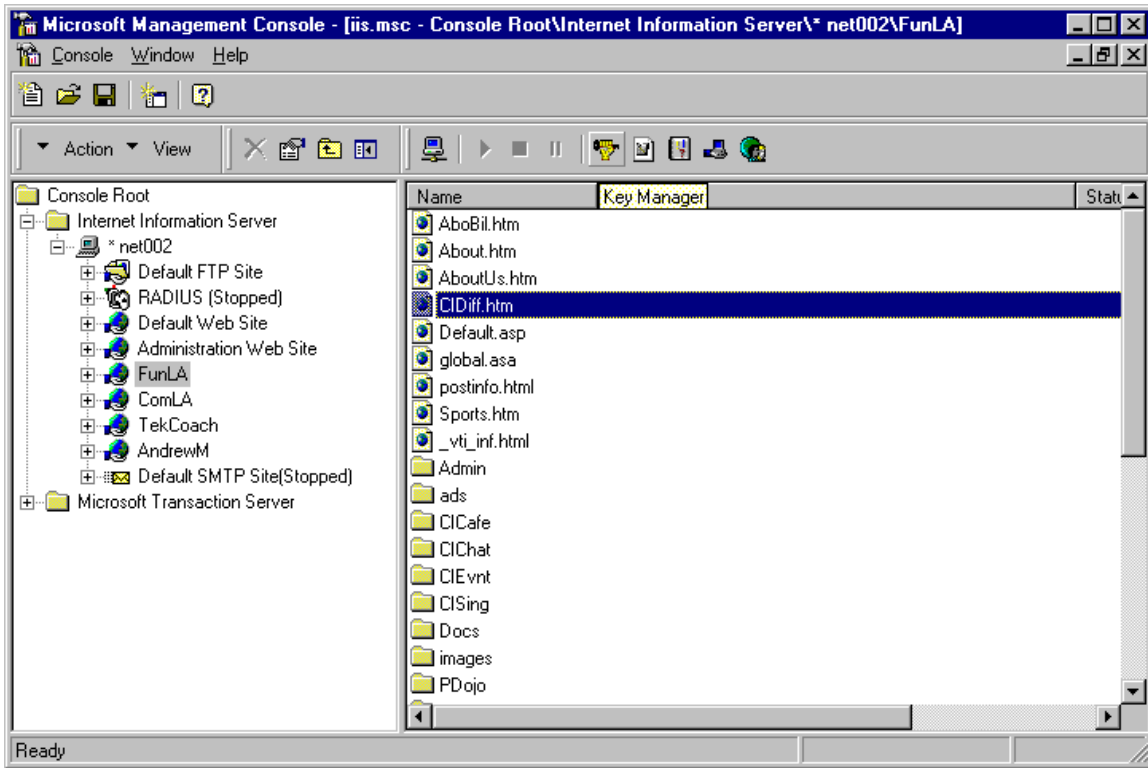


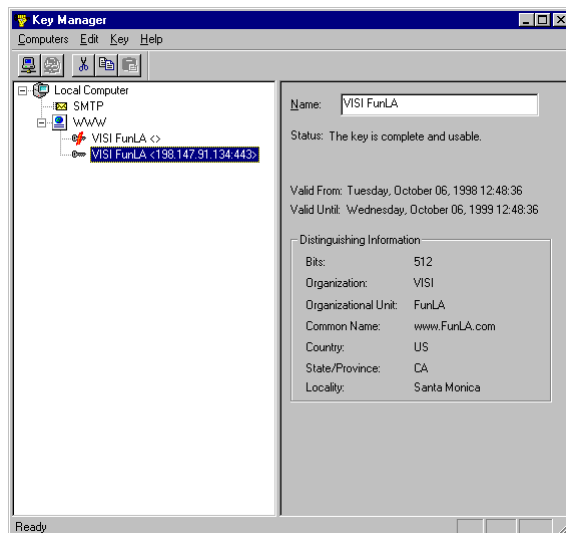
Using Certificates on the Web

Galen Hunter, www.VInsurance.com; Andrew Michalik, www.TekCoach.com

IIS Management Console w NT 4.0




IIS Key Manager:



Create a New Key

Create New Key



To begin creating a key, you must first target a specific certificate authority. This can be either a remote authority that is accessed through an intermediate file, or a local online authority.

If you choose a remote, file based authority, you will be responsible for sending the file and receiving the response. An online authority will be administered automatically.

Put the request in a file that you will send to an authority

C:\NewKeyRq.txt Browse...

Automatically send the request to an online authority

Microsoft Certificate Server Properties...

< Back Next > Cancel